



Role of migration, remittances and climate resilience in Tajikistan

Existing tendencies and perspectives

Professor Abdulkhamid Kayumov
Country Director, CAREC Tajikistan

Information about the project

RESEARCH PROJECT

- Project duration:
 - September 2015
 - December 2017
- Project partners:
 - SDPI, IDRC
- Project country:
 - Tajikistan (CAREC)
 - and Senegal (IAD)



Goals :

- **Explore role of migrants and remittances in the adaptation in semi-arid and arid regions under climate change**

Stages of implementation and results

Step 1: Desk review

- Output 1. Working paper (**The situation analysis and assessment**): *Migration, remittances and climate resilience in Senegal and Tajikistan.*
- Output 2. Methodology: Sampling number, pilot sites, questionnaires

Step 2: Household surveys

- Output 3: Working paper: **Key findings of the research** in Senegal and Tajikistan
- Output 4: Case studies: **Gender-specific role in migration**, remittances and climate resilience

Stages of implementation and results

- **Step 3: Comparative analysis**
- Output 5: Working paper: *Commonalities and differences between Senegal and Tajikistan in shaping remittances towards climate resilience*
- **Step 4: Scenario projections**
- Output 6: Policy Brief: *Informing policy makers about next steps towards climate resilient future and how migration and remittances can help shaping the efficient policies*
- Output 7: **Recommendations and a road map to improve the policies**

Progress since September 2015

September

National Focal Agencies in Tajikistan: Ministry of labor, migration and employment



October

Identifying Key staff members of the project team:

Project lead, project coordinator/climate researcher, social analyst, national expert, M&E officer



November 13th

Working meeting (kick-off) with stakeholders, to introduce the project and discuss the immediate implementation plan



Progress since September 2015

October-November

- Literature review, data collection and fine-tuning of the methodology:
- **Synchronizing the efforts^{3a} of the methodology and approach with the Senegal team**

December

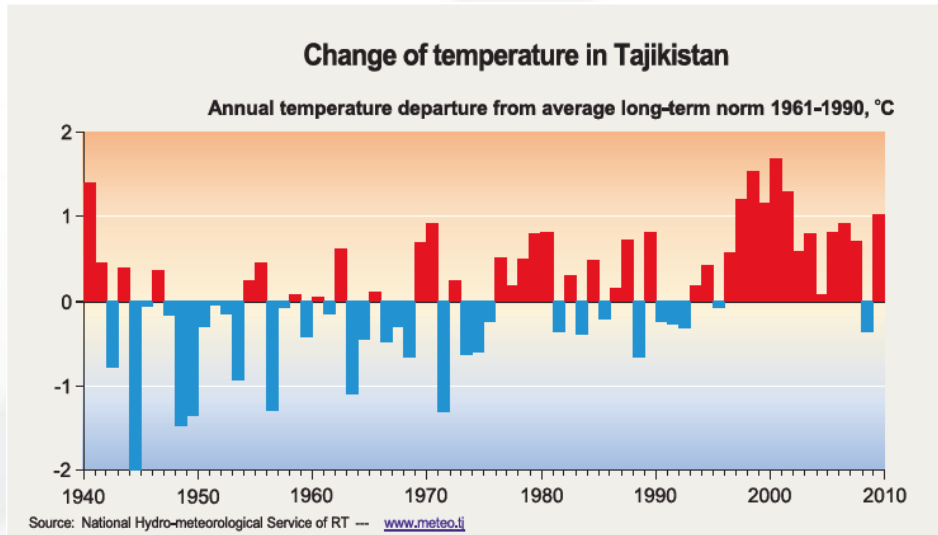
- Monthly reporting and updating about the progress



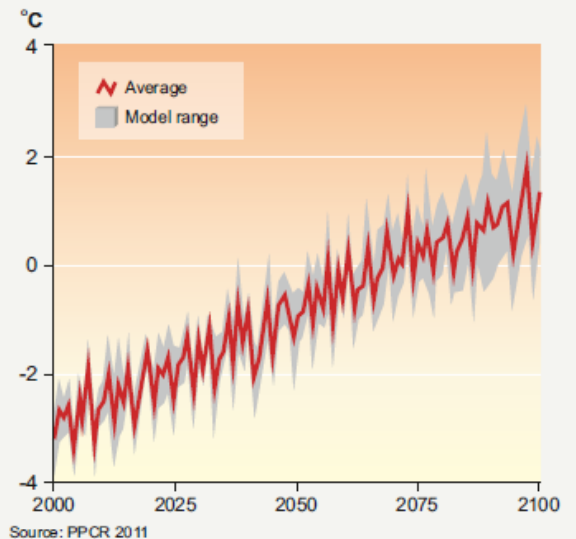
**The analysis situation
and assessment showed:**

- increase in mean annual temperature

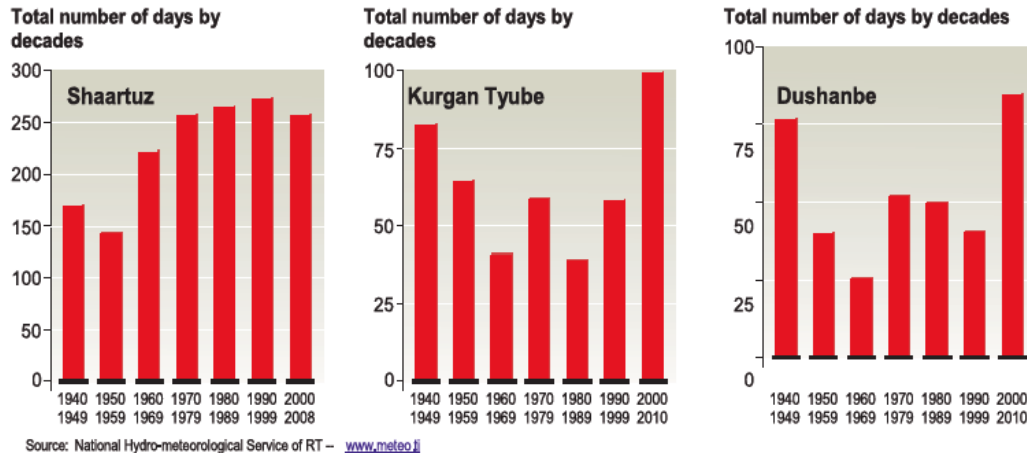
- the forecast shows an increase in the temperature up to 2100



Average annual temperature scenario Pamir-Alay mountain and glacier zone

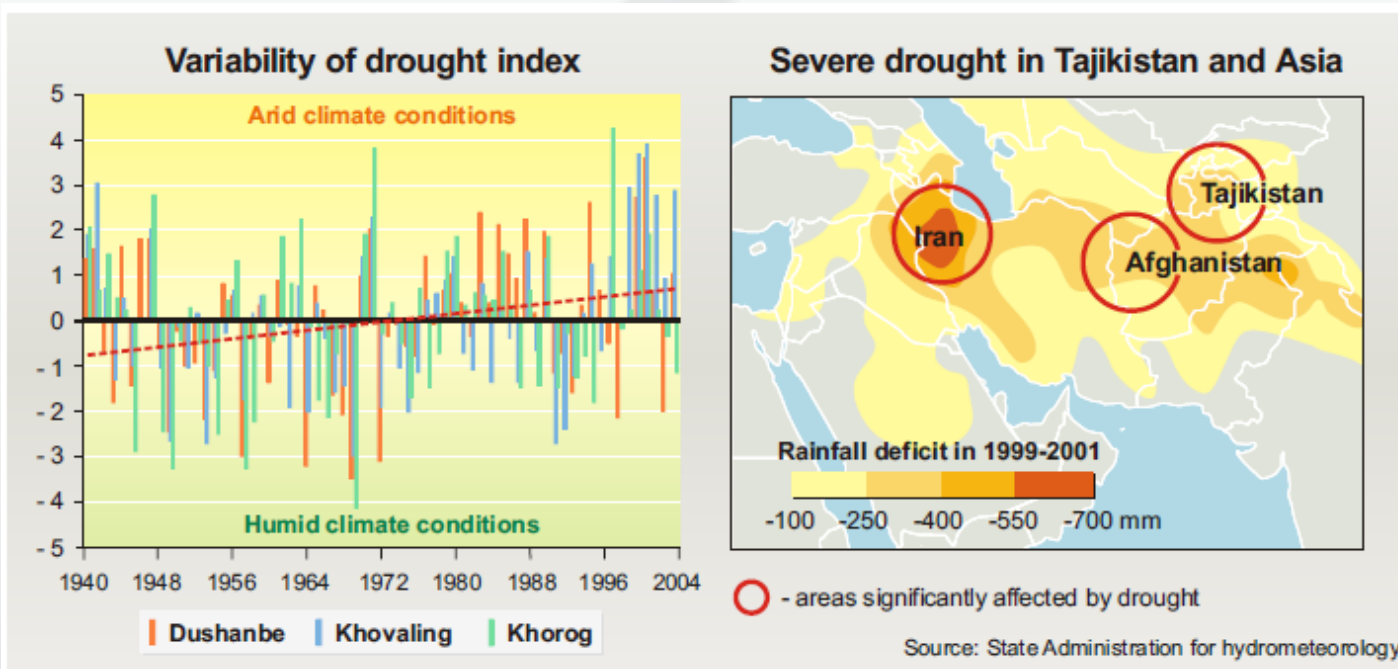


Variability of natural hydrometeorological events Frequency of days with temperature above +40°C

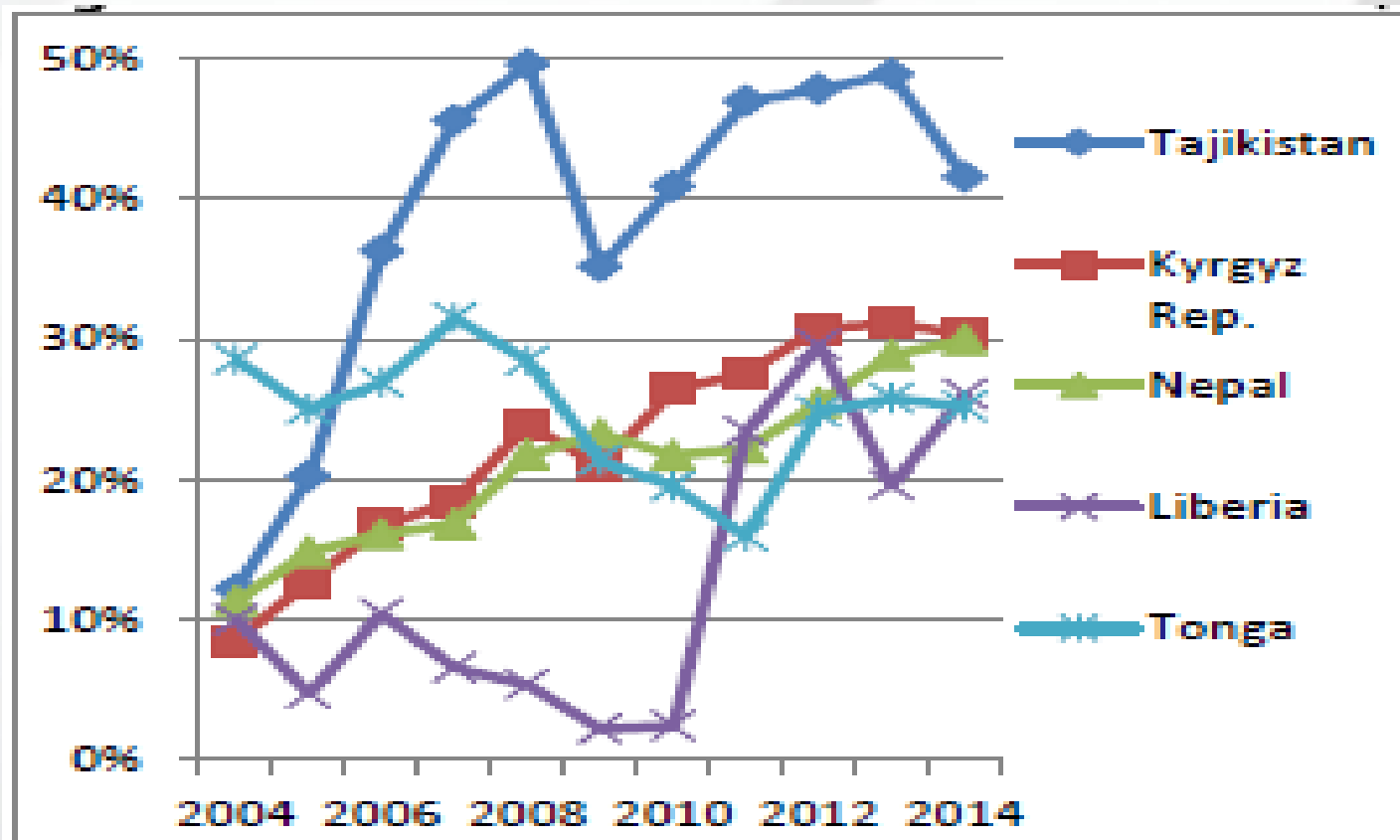


drought

- On the territory of Tajikistan, **it was very severe droughts**, covering the whole country: 1940, 1947, 1956, 1971, 1980, 1988, 2000, 2001, 2006, 2008.
- The figure shows that the **index of drought increases**

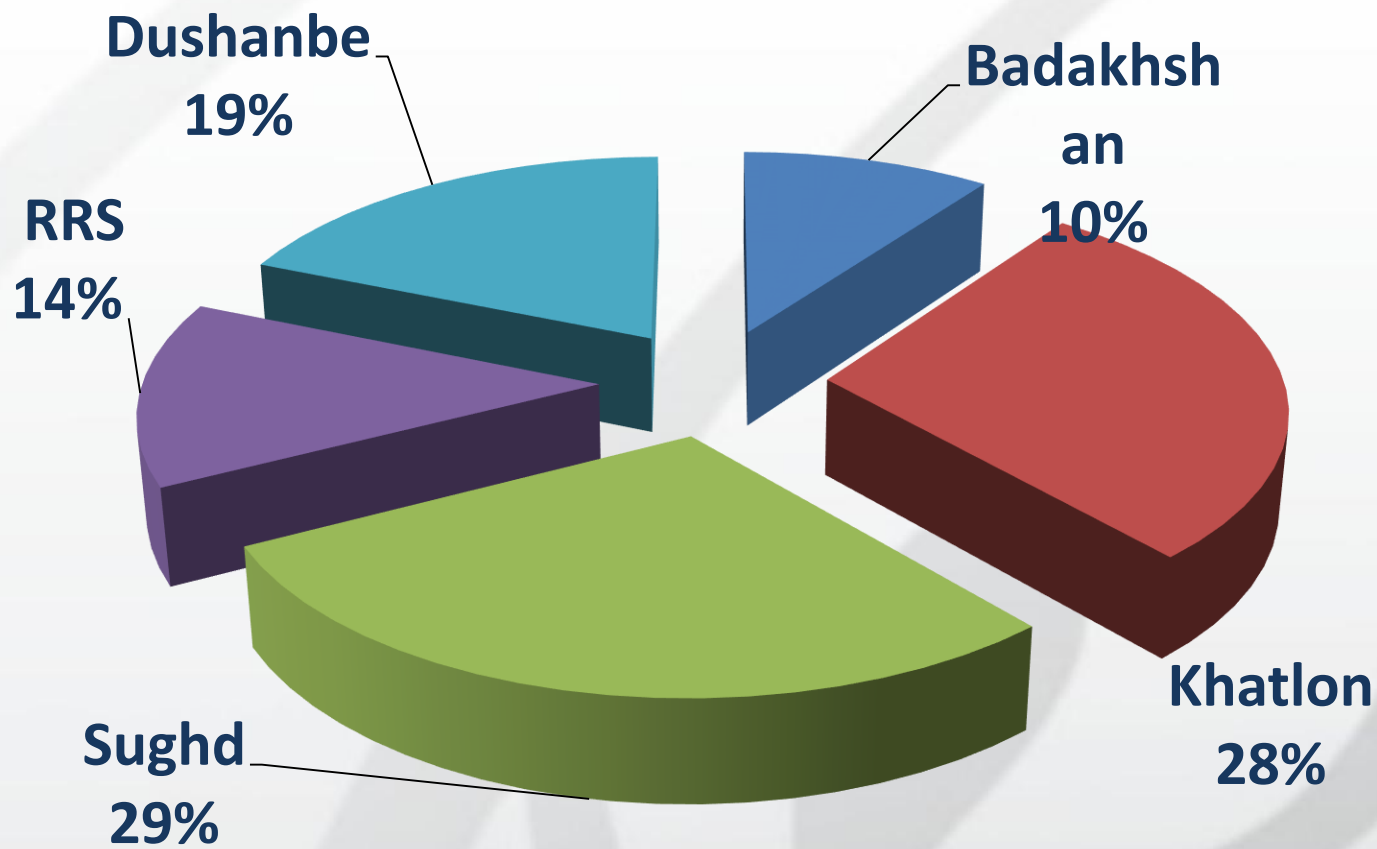


- **Analysis of the data showed the Highest labor migration in the Tajikistan**
- Main receiving country is Russia (90% of migrants)
- Highest rate of remittance flows
 - (2013: approx. \$4.1 billion/ 49% GDP)



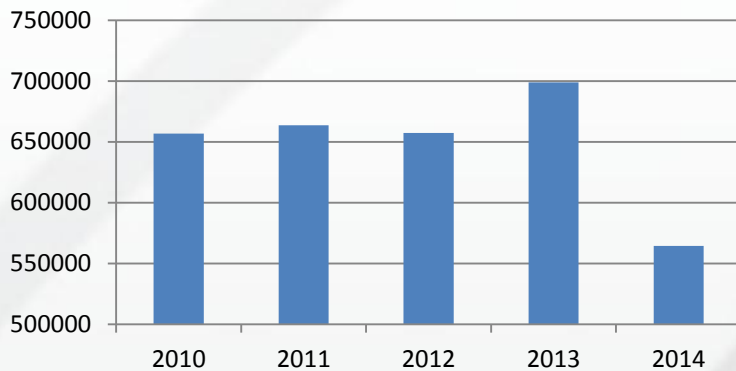
UNDP calculations, based on World Bank and IMF data.

The number of migrants from the regions of Tajikistan (2014)

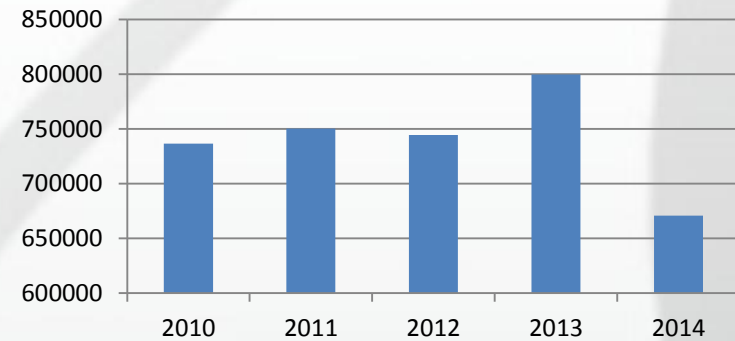


Dynamics of labor migration in 2010-2014

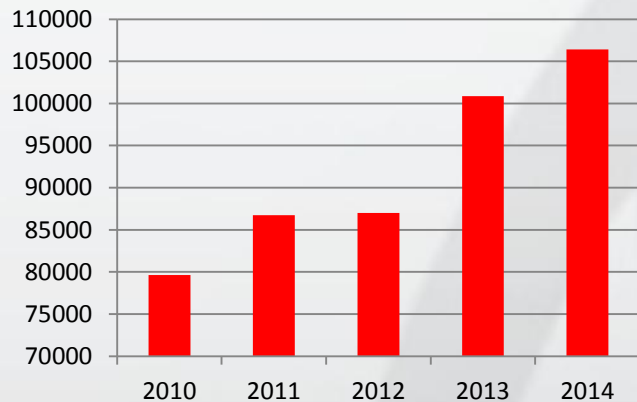
Men



The number of migrant workers who have left in the period 2010-2014

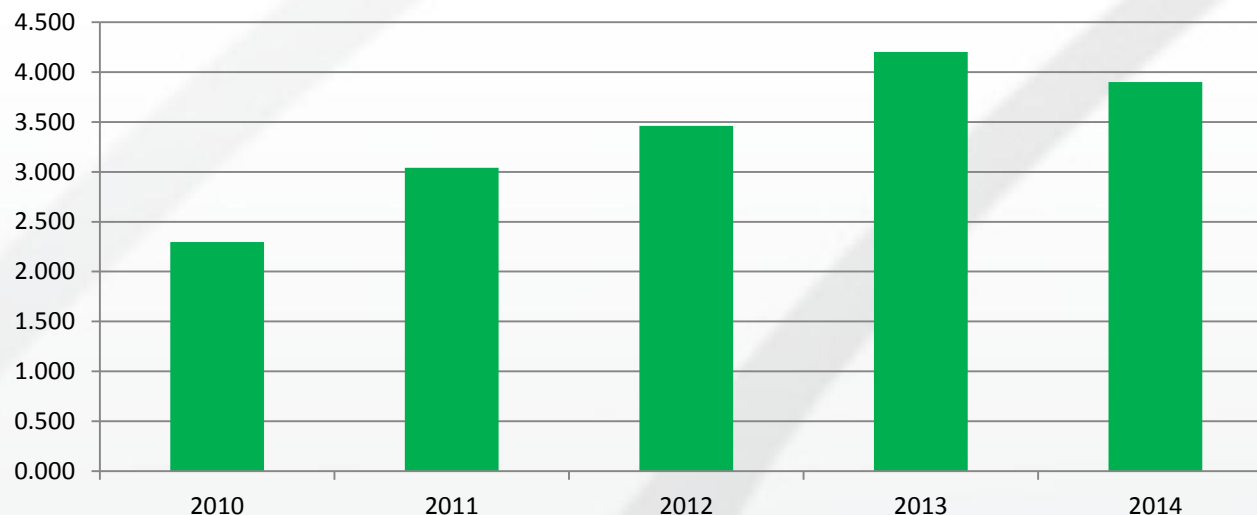


Women



Dynamics in remittances flow in 2014-2015

Dynamics in remittances flow in 2010-2014 (bill. doll.)



This graph shows a strong dependence between a receiving country (Russia) and sending country (Tajikistan).

Since 2013 due to economic slowdown in Russia and tight emigration control policies the flow of migration together with the levels of remittances sent back home decreased.

Thank you!

Contacts:

Professor. Abdulkhamid Kayumov
Country Director, Tajik Branch

The Regional Environment Centre for Central Asia,
CAREC

akayumov@carececo.org

abdkaumov@mail.ru

www.carececo.org



The research project is supported by **PRISE**
(Pathways to Resilience in Semi-Arid
Economies) Initiative

